

For MD8470A Signalling Tester

MX847031A

CDMA2000 AppEase

CDMA2000
1X/1xEV-DO Revision A



Soft/Hard Handoff

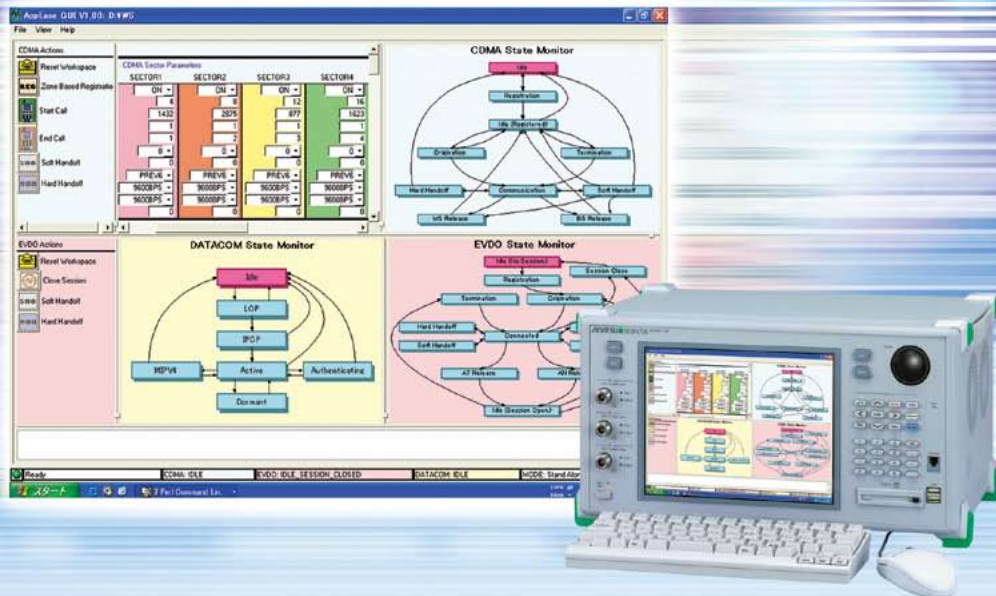
PPP / Mobile IP

Hybrid Mode

Data Throughput

System Determination

Test Automation



Flexible Network Simulation for Powerful CDMA2000 Mobile Terminal Operation Tests

Broadband communications systems, such as 1xEV-DO, are being increasingly introduced for high-speed data services in mobile communication market. An important subject for carriers and vendors is how to become more competitive by building efficient test environments for development of new terminals and services supporting new technologies and high-speed data applications. Anritsu has developed the MX847031A CDMA2000 AppEase software for running a CDMA2000 network simulation environment on the MD8470A Signalling Tester to test CDMA2000 mobile terminal software and services. Its simple user interface supports simulation of a full range of communications conditions while the control interface for configuring automated test systems greatly improves testing productivity.

CDMA2000® is a registered trademark of the Telecommunications Industry Association (TIA-USA).

Key CDMA2000 AppEase Features

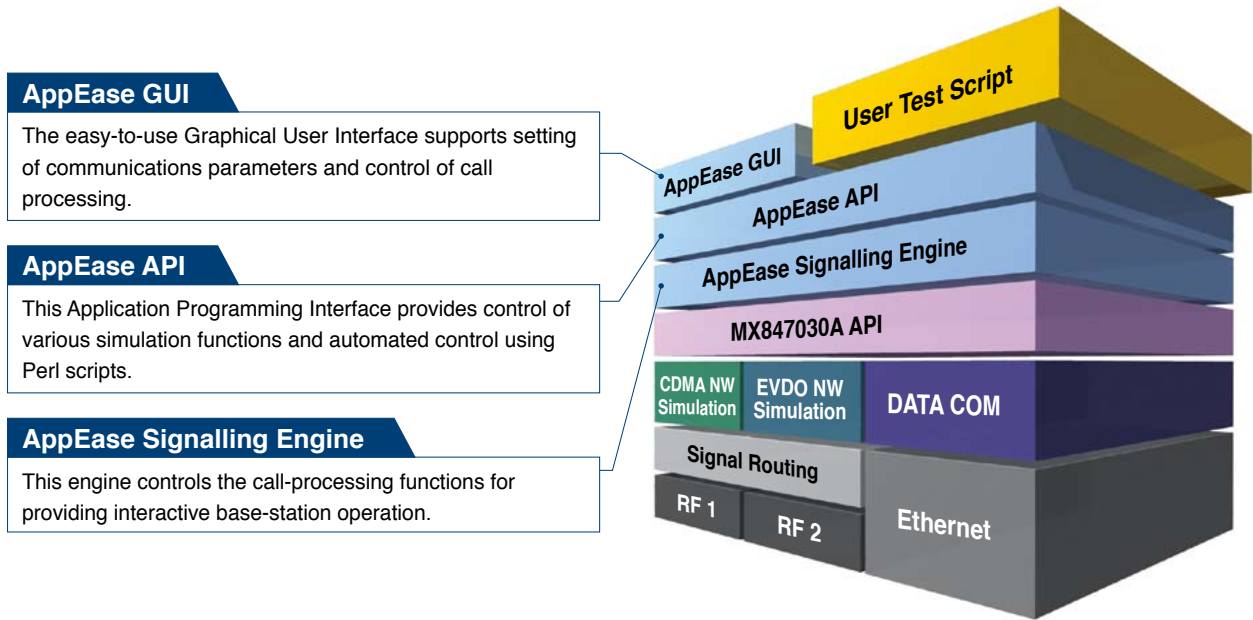
- Offers flexible simulation of CDMA2000 1X, 1xEV-DO (Rev. 0 and Rev. A) networks
- Supports voice, data communication, and messaging (SMS, EMS, MMS), etc. services
- Supports handoff and 1X/1xEV-DO hybrid tests in multisector/multicarrier environments
- Offers integrated simulation environment, including PPP, and Mobile IP
- Offers high-speed packet environment required for data throughput function tests
- Supports automated test systems using API (Application Programming Interface)

Main CDMA2000 AppEase Applications

- Confirming operation at CDMA2000 terminal integration tests
- Confirming connection compatibility by simulating carrier network
- Stress-testing terminals by repeated origination, termination, handoff tests, etc.
- Checking operation at terminal quality assurance
- Confirming carrier terminal acceptance tests
- Using as test platform for building automated test system

CDMA2000 AppEase Architecture

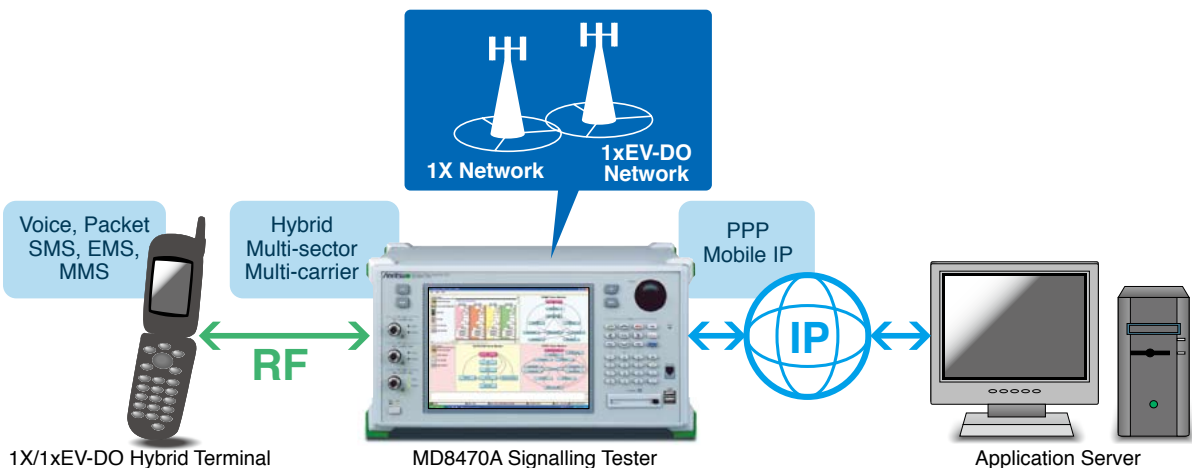
CDMA2000 AppEase is an application that runs on the MD8470A in which the MX847030A CDMA2000 Simulation Kit has been installed. It uses a simple GUI and script control to offer flexible base station simulation functions.



Flexible and Integrated CDMA2000 Network Simulation Environment

The operation of CDMA2000 terminals can be tested using the flexible network simulation functions provided by CDMA2000 AppEase, including handoff tests in a multisector/multicarrier environment, 1X/1xEV-DO hybrid terminal tests, etc. In addition, not only can 1X base stations and 1xEV-DO access networks be simulated but an integrated CDMA2000 network can also be simulated for supporting protocols and data communications at network nodes such as PPP/Mobile IP nodes.

- Supports both Soft Handoff and Hard Handoff tests used in multisector (1X: 6 sectors, 1xEV-DO: 3 sectors) and multicarrier (2 carriers) environments
- Supports Overhead Message setting for each 1X and 1xEV-DO sector
- Supports PDSN PPP negotiation and Mobile IP Foreign Agent and Home Agent emulation functions



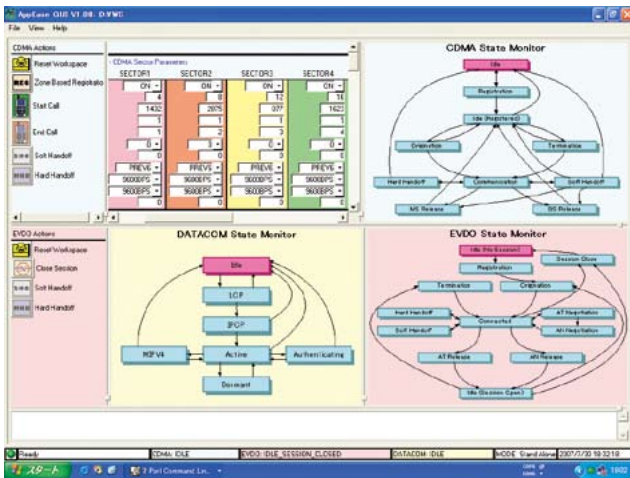
Work Space

The CDMA2000 AppEase work space function allows multiple users to share one test platform and can also be used for different test objectives. Using this function, the operator can save CDMA2000 network setup conditions, network parameters, operation screen layouts, etc., in a unique work space that can be switched easily to fetch different test environments.

GUI-based Simulation Control

All the CDMA2000 AppEase functions, settings, and operations are handled by an easy-to-use graphical user interface (GUI).

- Various parameters and setting conditions, such as Overhead Message, RF, Sector, Channel, etc., can be set for each CDMA2000 1X and 1xEV-DO sector.
- PPP and Mobile IP negotiation conditions can be set.
- Handoff test condition settings and test execution is easy.
- CDMA2000 1X, 1xEV-DO, data communications (PPP) state transitions can be monitored in real time using the state monitor functions.
- The layout of each setting and state monitor screen can be freely customized.



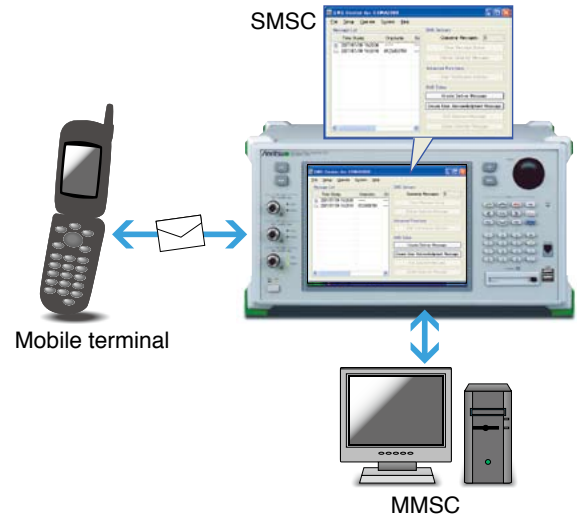
AppEase GUI Screen

Test System Automation using API

CDMA2000 AppEase provides an API (Application Programming Interface) for running various simulation functions using Perl scripts. Calling an API from a Perl script allows easy control of parameter settings, starting and stopping of call processing, execution of handoff, etc., simplifying configuration of automated test systems. This eliminates the need to create layer-3 protocol sequences, which increases the efficiency of test case creation required for terminal operation tests.

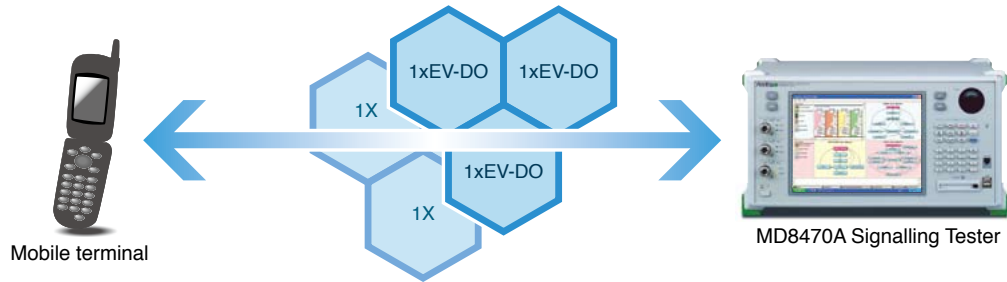
Efficient Messaging Test Environment using SMSC (SMS Center)

MX847030A has a built-in SMSC (SMS Center) application emulating an SMS (Short Message Service) Center. Using the SMSC function supports creation and sending of SMS messages to CDMA2000 terminals; SMS messages sent from terminals can be displayed too. Moreover, by using the SMSC external interface function, it is also possible to work with MMSC (MMS Center) servers, etc., to run MMS tests.

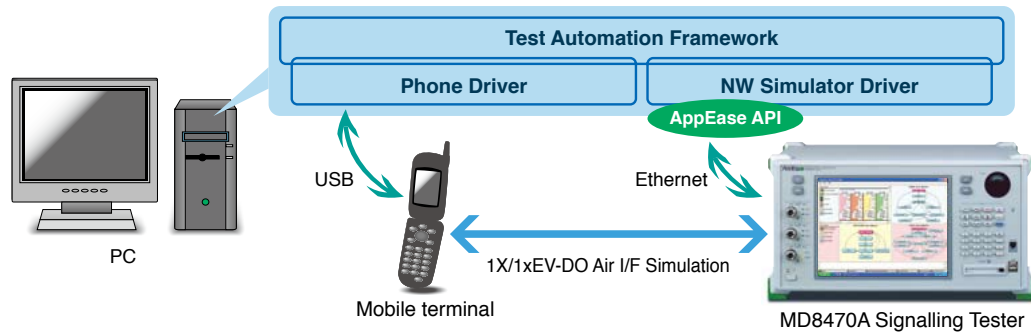


Example of CDMA2000 AppEase Test System Setup

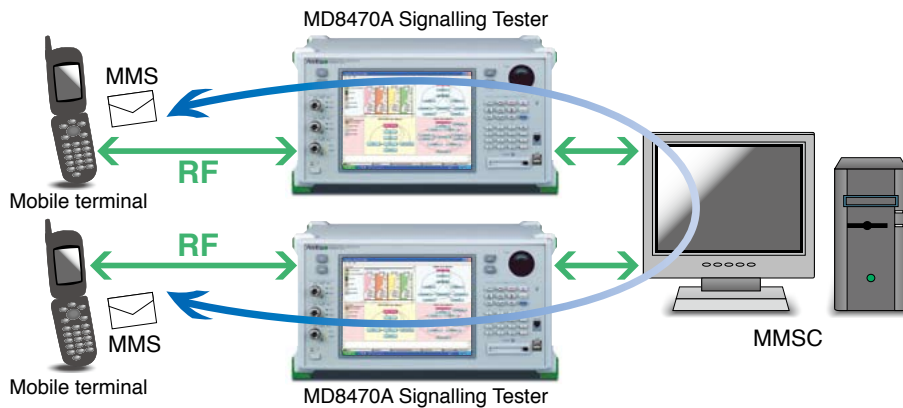
Hybrid Operation Test in 1X and 1xEV-DO Multisector Environment



Automated Test System Configuration using CDMA2000 AppEase API



End-to-End MMS Test Environment using Two MD8470A Units with CDMA2000



Outline of CDMA2000 AppEase Functions

Joint Functions	Access Network configuration settings (when simulating CDMA2000 1X or 1xEV-DO only)	1 sector x 1 RF 2 sectors x 2 RF 3 sectors x 1 RF 6 sectors x 1 RF (1X only)
	Access Network configuration settings (when simulating CDMA2000 1X and 1xEV-DO hybrid mode)	CDMA2000 1X 1 sector + 1xEV-DO 1 sector CDMA2000 1X 3 sectors + 1xEV-DO 3 sectors CDMA2000 1X 6 sectors + 1xEV-DO 3 sectors
	Band Class	0 to 15
	Handoff Functions	Intra-band hard, Inter-band hard, Soft/Softer
	Call Drop Functions	ON/OFF, Timer
	Others	State/Monitor Function (1X, 1xEV-DO, DATACOM)
CDMA2000 1X Simulation Functions	Protocol Revision	PREV6
	Service Option	Voice Service: SO1, SO3, SO68, SO32768 Data Service: SO33 (FCH or DCCH for signalling) Short Message Service: SO6, SO14
	Messaging Support (SMS Centre)	SMS, EMS, MMS*
	RF Settings	Band class, Channel, RF power
	Others	MEID, Overhead Message settings
1xEV-DO Simulation Functions	Protocol Revision	Revision 0, A
	Supported Protocol Subtypes	All default subtypes, Generic security protocol, SHA-1 authentication protocol, RTC MAC subtype 1, RTC MAC subtype 3, Enhanced FTC MAC, Enhanced AC MAC, Enhanced CC MAC, Enhanced idle state, Multi-flow packet application, Subtype 2 physical layer
	Session Negotiation	Up to 4 personalities, Negotiated subtype query
	Others	Overhead message settings, Idle personality handoffs
Data Communications Control	PPP Protocol	LCP, IPCP
	IP Protocol	Simple IP Mobile IPv4 (FA/HA Functions, Error Codes/Secret Key)
	Others	PCF Dormancy: Enable, Timeout VJ Compression

*: Requires separate MMS application sever

CDMA2000 AppEase Setting Parameters, Actions and Monitor Information

Menu	Category	Parameter/Action/Monitor
CDMA Actions	(Action)	Reset Workspace, Zone Based Registration, Start Call, End Call, Soft Handoff, Hard Handoff
CDMA Parameters	RF	BAND_CLASS, CHANNEL, REV_FREQ, REV_POWER, REV_CONNECTOR, FWD_FREQ, FWD_POWER, FWD_CONNECTOR, AWGN_ENABLE, AWGN_LEVEL
	Sector	ENABLE, PN_OFFSET, SID, NID, BASE_ID, FRAME_OFFSET, LEVEL, P_REV, PCH_DATARATE, QPCH_DATARATE, QPCH_LEVELPAGE
	Channel	FDCCH_LEVEL, FDCCH_WALSHCODE, FFCH_LEVEL, FFCH_WALSHCODE, OCNS_ENABLED, OCNS_WALSHCODE, PICH_LEVEL, PCH1_LEVEL, PHY_LAYER_TCH_CONFIG, SYNC_LEVEL
	Call Related	CALL_DROP_ENABLE, CALL_DROP_TIMER, MSID_ENABLE, MSID, MSID_LEN, MSID_TYPE, NW_ORIG_RC, NW_ORIG_SECTOR, NW_ORIG_SERVICE_OPTION, NW_ORIG_SMS_SERVICE_OPTION, SIGNALING_CHANNEL
	Overhead Messages	SCHM, SPM, APM, NLM, CCLM, ESPM, ENLM, GSRDM, GNLM, EGSRDM, ECCLM, A41SPM, MCRRPM, A41RANDM, EAPM, UNLM
CDMA State Monitor	(Monitoring)	Idle, Registration, Idle (Registered), Origination, Termination, Communication, MS Release, BS Release, Hard Handoff, Soft Handoff
CDMA MS Information	(Monitoring)	MSID, MSID_LEN, MSID_TYPE, MS Slot Cycle Index, DCCH Supported, Mobile Protocol Revision
EVDO Actions	(Action)	Reset Workspace, Close Session, Soft Handoff, Hard Handoff
EVDO Parameters	RF	BAND_CLASS, CHANNEL, REV_FREQ, REV_POWER, REV_CONNECTOR, FWD_FREQ, FWD_POWER, FWD_CONNECTOR, AWGN_ENABLE, AWGN_LEVEL
	Sector	ENABLE, PN_OFFSET, FRAMEOFFSET, LEVEL, SECTORID, COLORCODE
	Channel	DRCLENGTH
	Session	UATI024, CALL_DROP_ENABLE, CALL_DROP_TIMER, PERSONALITY_INDEX
	Personality	NEGOTIATE, PACKET_APPLICATION, SUBTYPE_IDP, SUBTYPE_SP, SUBTYPE KEP, SUBTYPE_AP, SUBTYPE_CCMP, SUBTYPE_FTCMP, SUBTYPE_ACMP, SUBTYPE_RTCMP, SUBTYPE_PHY
	Overhead Messages	SECTORPARAMETERS, ACCESSPARAMETERS, QUICKCONFIG, SYNC, BROADCASTREVERSERATELIMIT
EVDO State Monitor	(Monitoring)	Idle (No Session), Registration, Idle (Session Open), Origination, Termination, Connected, AT Release, AN Release, AT Negotiation, AN Negotiation, Hard Handoff, Soft Handoff
EVDO AT Information	(Monitoring)	Hardware Id, Hardware Id Len, Hardware Id Type
DATAKOM Actions	(Action)	Reset Workspace, Renegotiate PPP
DATAKOM Parameters	IPCP	COMPRESSION_FLAG, IP_COMPRESSION_PROTOCOL, MAX_SLOTID, PRIMARY_DNS_ADDR, SECONDARY_DNS_ADDR, PRIMARY_NBNS_ADDR, SECONDARY_NBNS_ADDR, REMOTE_IPADDR
	LCP	ACCM, ACFC_ENABLE, MRU, PFC_ENABLE
	Mobile IP	ERROR_CODE_RETURN_ENABLE, ERROR_CODE_RETURN_VALUE, HOME_AGENT_IP_ADDR, REGISTRATION_LIFETIME, SECRET_KEY
	PCF	DORMANCY_ENABLE, DORMANCY_TIMEOUT
	PDSN	PDSN_IP_ADDR
DATAKOM State Monitor	(Monitoring)	Idle, LCP, IPCP, Active, Dormant, MIPv4, Authenticating
COMMON Actions	(Action)	Reset Workspace, Connect To SMSC, Disconnect From SMSC
COMMON Parameters	Common	ADDR, NETMASK, GATEWAY, SMSC_IP_ADDRESS, TIMEFORMAT, TIME
Radio Access Network Configuration	(Monitoring)	Radio access network configuration display
Script Information	(Information)	IP Address, Version, Script Name, Full Path Name (Call control script information)

Product Configuration

MX847031A CDMA2000 AppEase

This software supports basic call processing and various handover tests in a multi-sector/multi-carrier environment. In addition to setting various network parameters at the GUI, an automated test system is easily configured using the Anritsu-provided AppEase API.

MX847031A-20 MX847031A Support Service (1 year)

This contract covers response to inquiries from users, and maintenance releases. MX847031A-20 is the software maintenance contract for MX847031A.

CDMA2000 AppEase and MD8470A Signalling Tester Configurations

The supported CDMA2000 AppEase test functions vary with the MD8470A Signalling Tester configuration as shown in the following table.

	MD8470A Signalling Tester	MU847030A CDMA2000 1X Signalling Unit	MU847032A CDMA2000 1xEV-DO Signalling Unit	MD8470A-01/02 Second RF Option	MX847030A CDMA2000 Simulation Kit	MX847030A-01 Multisector/Multicarrier
CDMA2000 1X Test Setup	1	1			1	
CDMA2000 1X Multisector/Multicarrier Test Setup	1	1		1	1	1
CDMA2000 1X/1xEV-DO Test Setup	1	1	1	1	1	
CDMA2000 1X/1xEV-DO Multisector/Multicarrier Test Setup	1	1	1	1	1	1

CDMA2000 1X Test Setup: Supports CDMA2000 1X 1BTS simulation

CDMA2000 1X Multisector/Multicarrier Test Setup: Supports CDMA2000 1X multicarrier and multisector simulation

CDMA2000 1X/1xEV-DO Test Setup: Supports CDMA2000 1X 1BTS/1xEV-DO 1BTS simulation (including hybrid tests)

CDMA2000 1X/1xEV-DO Multisector/Multicarrier Test Setup: Supports CDMA2000 1X/1xEV-DO multicarrier and multisector simulation



Specifications are subject to change without notice.

Anritsu Corporation

5-1-1 Onna, Atsugi-shi, Kanagawa, 243-8555 Japan
Phone: +81-46-223-1111
Fax: +81-46-296-1264

• U.S.A.

Anritsu Company

1155 East Collins Blvd., Suite 100, Richardson,
TX 75081, U.S.A.
Toll Free: 1-800-267-4878
Phone: +1-972-644-1777
Fax: +1-972-671-1877

• Canada

Anritsu Electronics Ltd.

700 Silver Seven Road, Suite 120, Kanata,
Ontario K2V 1C3, Canada
Phone: +1-613-591-2003
Fax: +1-613-591-1006

• Brazil

Anritsu Eletrônica Ltda.

Praca Amadeu Amaral, 27 - 1 Andar
01327-010-Paraisópolis São Paulo-Brazil
Phone: +55-11-3283-2511
Fax: +55-11-3288-6940

• U.K.

Anritsu EMEA Ltd.

200 Capability Green, Luton, Bedfordshire, LU1 3LU, U.K.
Phone: +44-1582-433200
Fax: +44-1582-731303

• France

Anritsu S.A.

16/18 avenue du Québec-SILIC 720
91961 COURTABOEUF CEDEX, France
Phone: +33-1-60-92-15-50
Fax: +33-1-64-46-10-65

• Germany

Anritsu GmbH

Nemetschek Haus, Konrad-Zuse-Platz 1
81829 München, Germany
Phone: +49-89-442308-0
Fax: +49-89-442308-55

• Italy

Anritsu S.p.A.

Via Elio Vittorini 129, 00144 Roma, Italy
Phone: +39-6-509-9711
Fax: +39-6-502-2425

• Sweden

Anritsu AB

Borgaffjordsgatan 13, 164 40 KISTA, Sweden
Phone: +46-8-534-707-00
Fax: +46-8-534-707-30

• Finland

Anritsu AB

Teknobulevardi 3-5, FI-01530 VANTAA, Finland
Phone: +358-20-741-8100
Fax: +358-20-741-8111

• Denmark

Anritsu A/S

Kirkebjerg Allé 90, DK-2605 Brøndby, Denmark
Phone: +45-72112200
Fax: +45-72112210

• Spain

Anritsu EMEA Ltd.

Oficina de Representación en España

Edificio Veganova
Avda de la Vega, n° 1 (edf 8, pl 1, of 8)
28108 ALCOBENDAS - Madrid, Spain
Phone: +34-914905761
Fax: +34-914905762

• United Arab Emirates

Anritsu EMEA Ltd.

Dubai Liaison Office

P O Box 500413 - Dubai Internet City
Al Thuraya Building, Tower 1, Suit 701, 7th Floor
Dubai, United Arab Emirates
Phone: +971-4-3670352
Fax: +971-4-3688460

• Singapore

Anritsu Pte. Ltd.

60 Alexandra Terrace, #02-08, The Comtech (Lobby A)
Singapore 118502
Phone: +65-6282-2400
Fax: +65-6282-2533

• India

Anritsu Pte. Ltd.

India Branch Office

Unit No. S-3, Second Floor, Esteem Red Cross Bhavan,
No. 26, Race Course Road, Bangalore 560 001, India
Phone: +91-80-32944707
Fax: +91-80-22356648

• P.R. China (Hong Kong)

Anritsu Company Ltd.

Units 4 & 5, 28th Floor, Greenfield Tower, Concordia Plaza,
No. 1 Science Museum Road, Tsim Sha Tsui East,
Kowloon, Hong Kong
Phone: +852-2301-4980
Fax: +852-2301-3545

• P.R. China (Beijing)

Anritsu Company Ltd.

Beijing Representative Office

Room 1515, Beijing Fortune Building,
No. 5, Dong-San-Huan Bei Road,
Chao-Yang District, Beijing 10004, P.R. China
Phone: +86-10-6590-9230
Fax: +86-10-6590-9235

• Korea

Anritsu Corporation, Ltd.

8F Hyunjuk Building, 832-41, Yeoksam Dong,
Kangnam-ku, Seoul, 135-080, Korea
Phone: +82-2-553-6603
Fax: +82-2-553-6604

• Australia

Anritsu Pty. Ltd.

Unit 21/270 Ferntree Gully Road, Notting Hill,
Victoria 3168, Australia
Phone: +61-3-9558-8177
Fax: +61-3-9558-8255

• Taiwan

Anritsu Company Inc.

7F, No. 316, Sec. 1, Neihu Rd., Taipei 114, Taiwan
Phone: +886-2-8751-1816
Fax: +886-2-8751-1817